

INTRODUCTION

SIMBHAOLI SUGAR LIMITED UNIT SUGAR

Name of Pond: NEVADA

PROJECT OVERVIEW

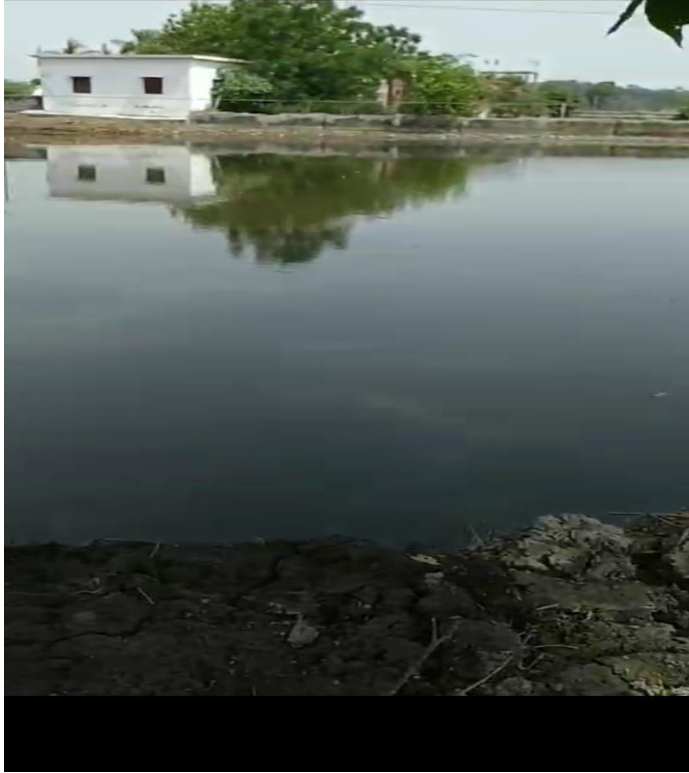




WEED REMOVAL- Manual removal of Weeds by labour



After Weed Removal Photographs



Silt and Clay Removal

- **Task:** Removal of silt and clay using JCB and Pork Land Machine.
- **Details:**
 - Use of heavy machinery to efficiently remove sediment and increase water capacity. Essential to restore the natural depth and flow of the pond.



Silt and Clay Removal Photographs



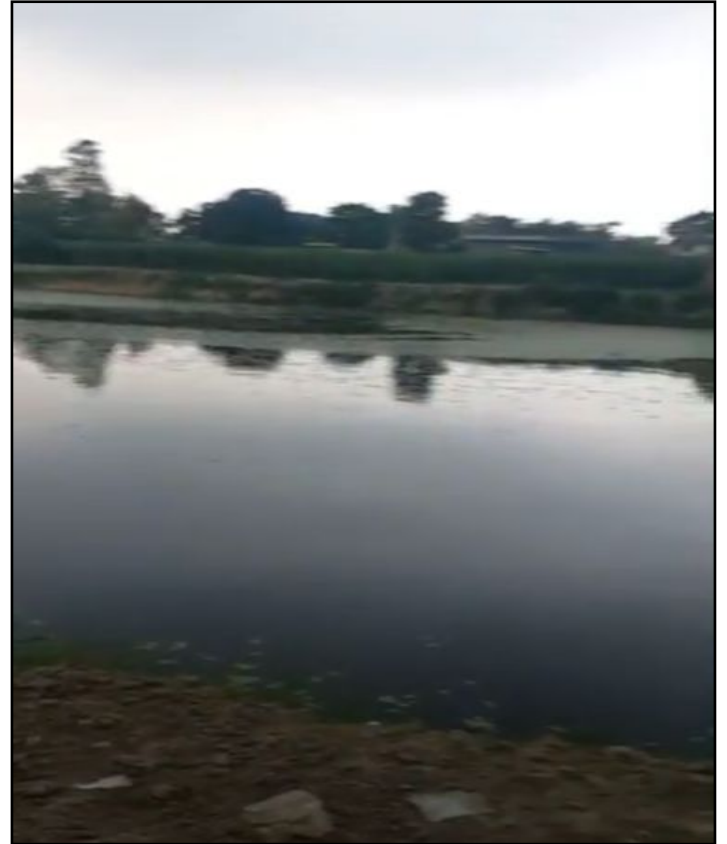
Increase Depth of the Pond

Deepen the pond to increase its water-holding capacity. Enhancing the depth helps in water retention and prevents drying out in seasons of low rainfall.



Bioremediation (Pond)

- **Task:** Conduct bio-remediation thrice a year.
- **Details:**
 - Use of natural or engineered microorganisms to treat water pollution.
 - Scheduled every four months to maintain water quality.



Earthen Levelling for Walkways

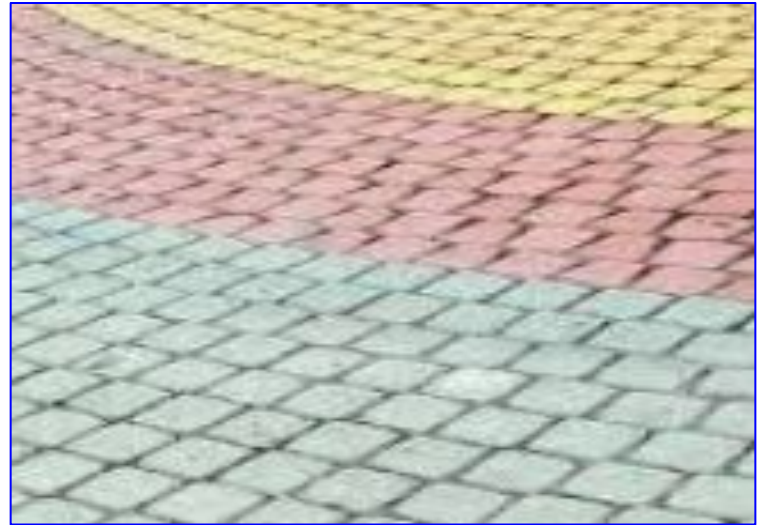
- **Task:** Levelling around the pond for walkways.
- **Details:**
 - Smooth terrain for easy access.
 - Prepares the ground for further paving or landscaping.





Paver Block Installation

- **Task:** Laying paver blocks on the walkway.
- **Details:**
 - Ensures a durable and aesthetically pleasing walkway for visitors.



Cement Poles

- **Task:** Erection of cement poles.
- **Details:**
 - For fencing and supporting structures around the pond.

